

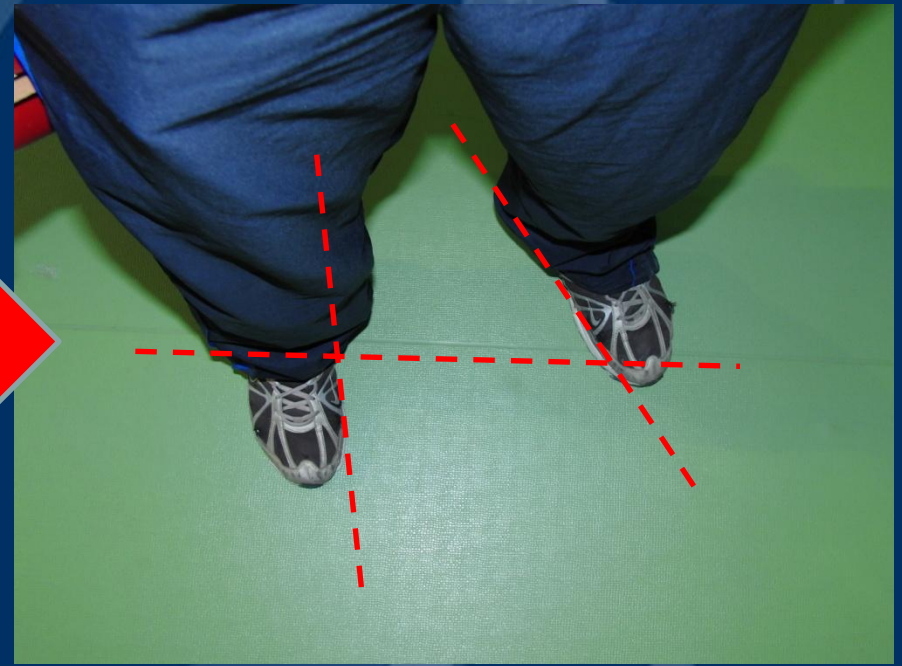
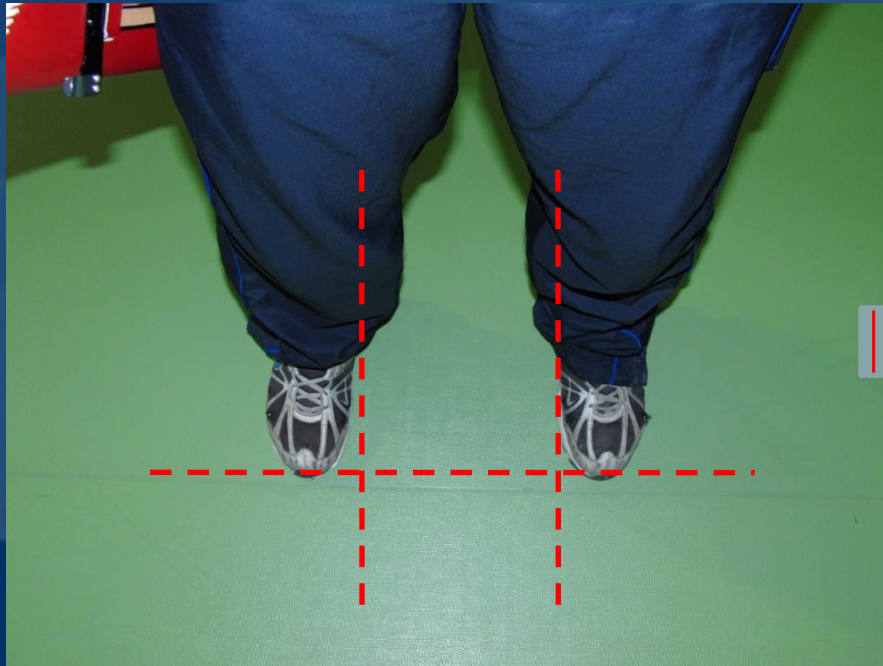


# 2015 World Archery Coaching Seminar

*Fuengirola, Spain*

*30 September – 4 October 2016*

# FEET POSITION

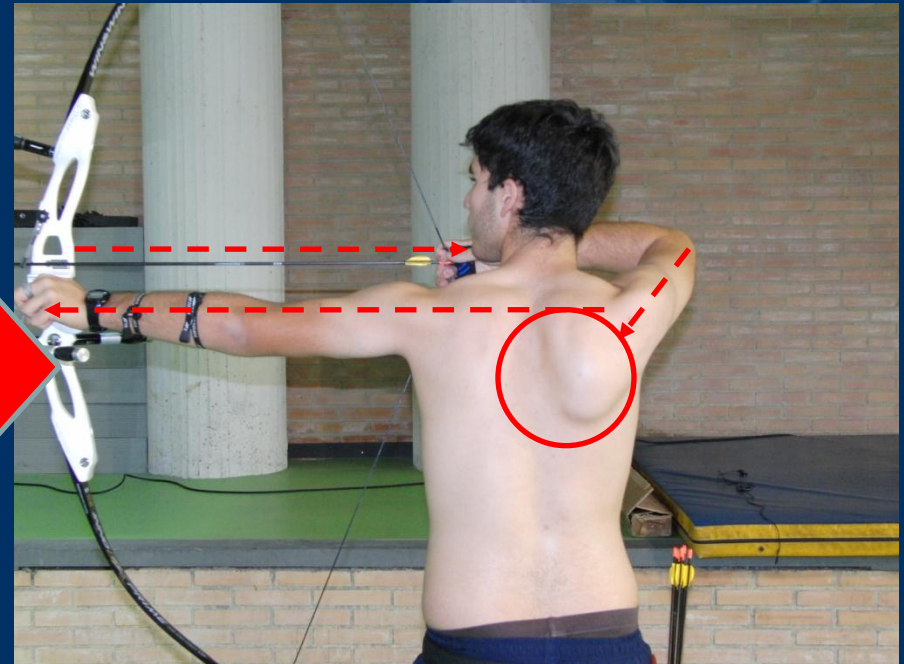
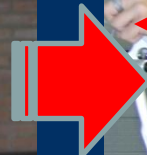


# SET-UP FRONTAL VIEW

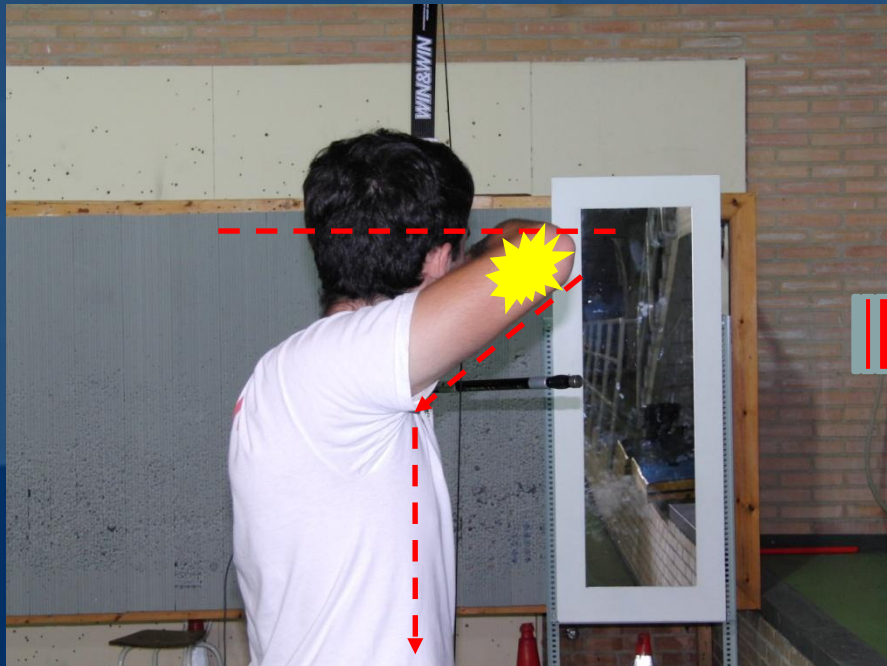




# SET-UP REAR VIEW



# SET-UP RIGHT VIEW

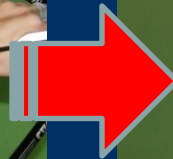


# SET-UP LEFT VIEW

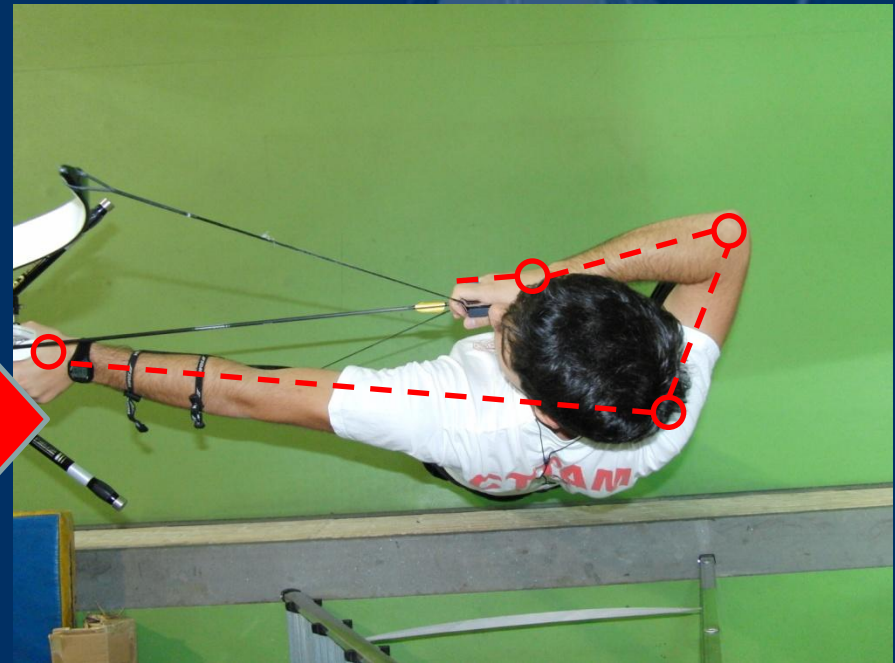
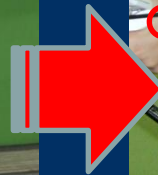
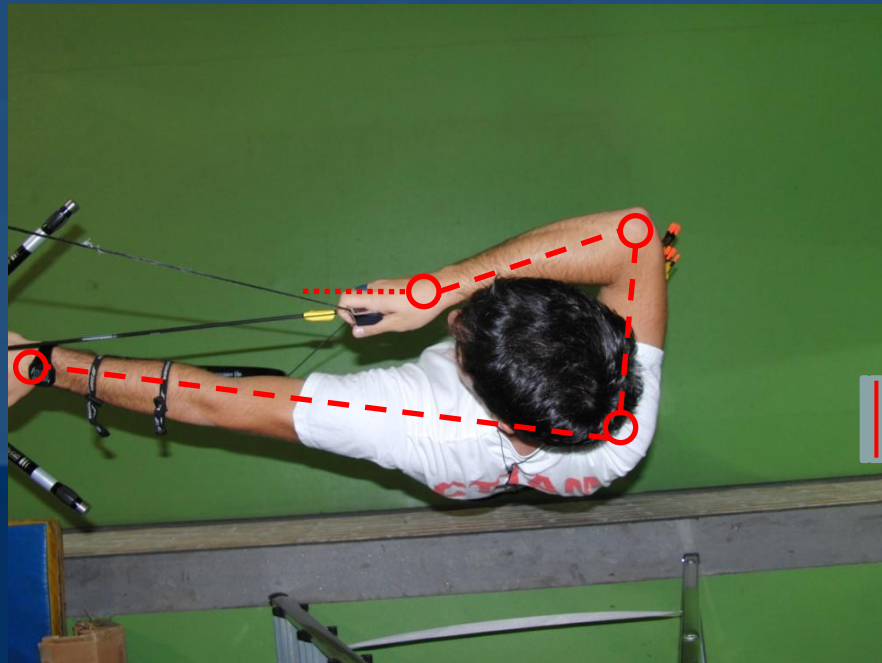




# SET-UP TOP VIEW



# SET-UP TOP VIEW II





# ANCHOR FRONTAL VIEW

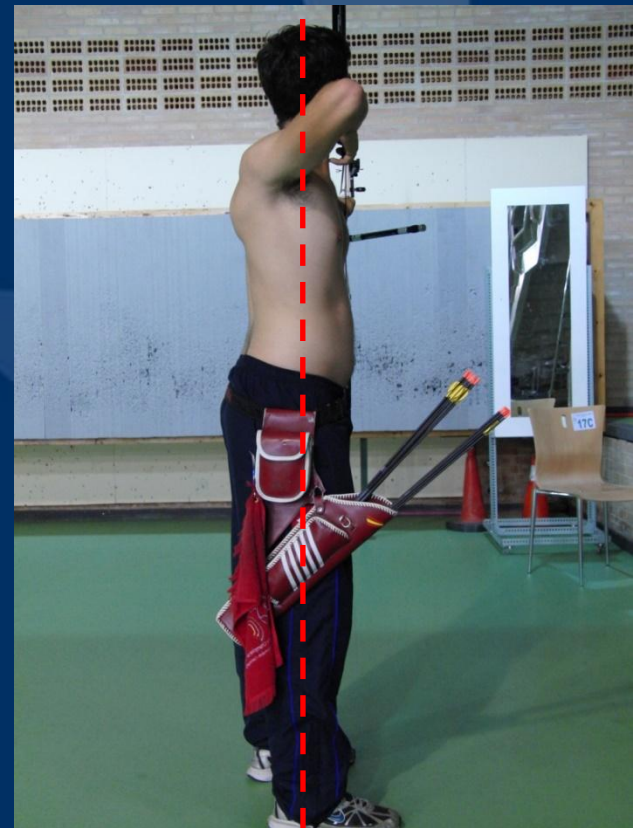
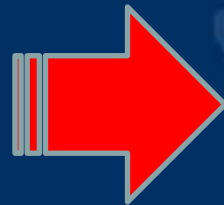
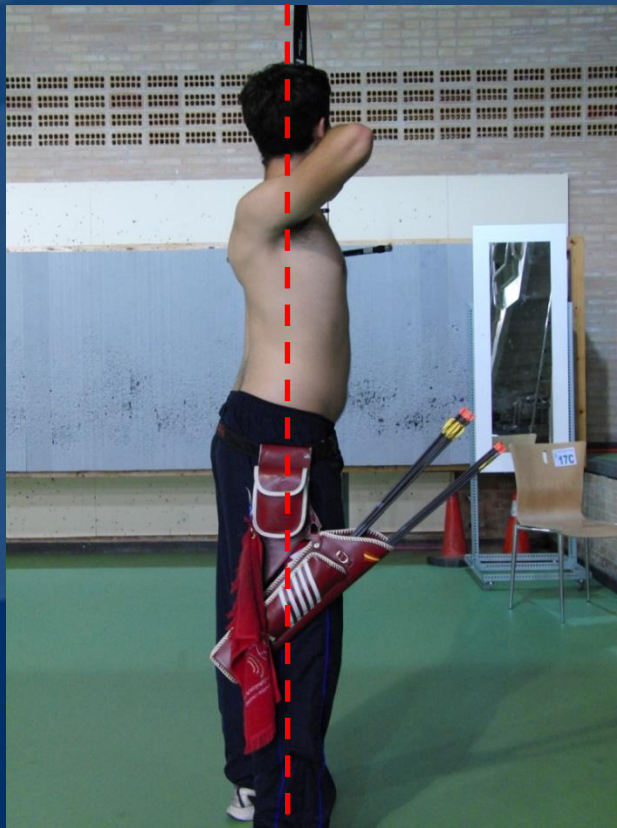


# ANCHOR REAR VIEW AND SCAPULA



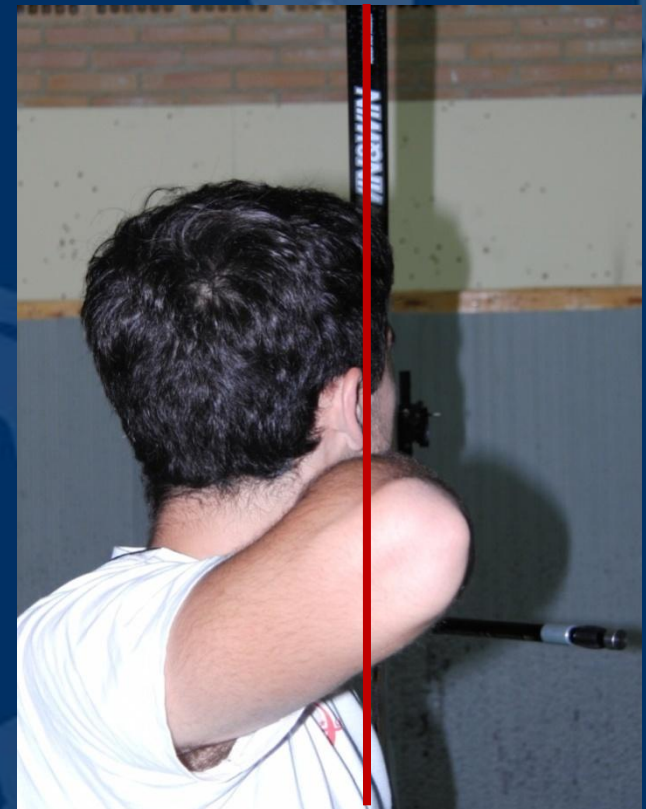
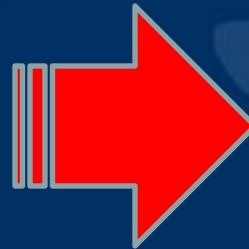


# ANCHOR BODY ALIGNMENT

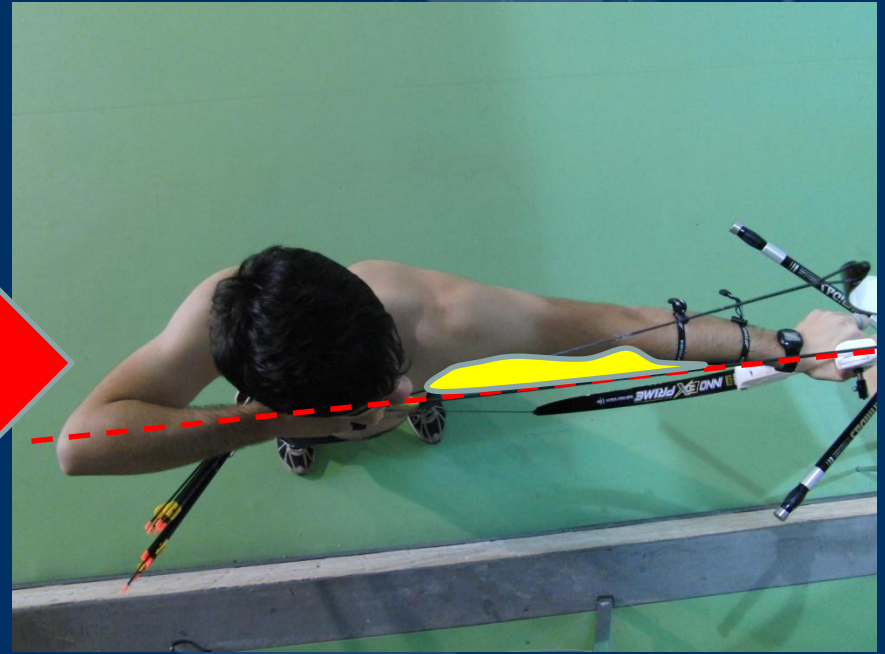
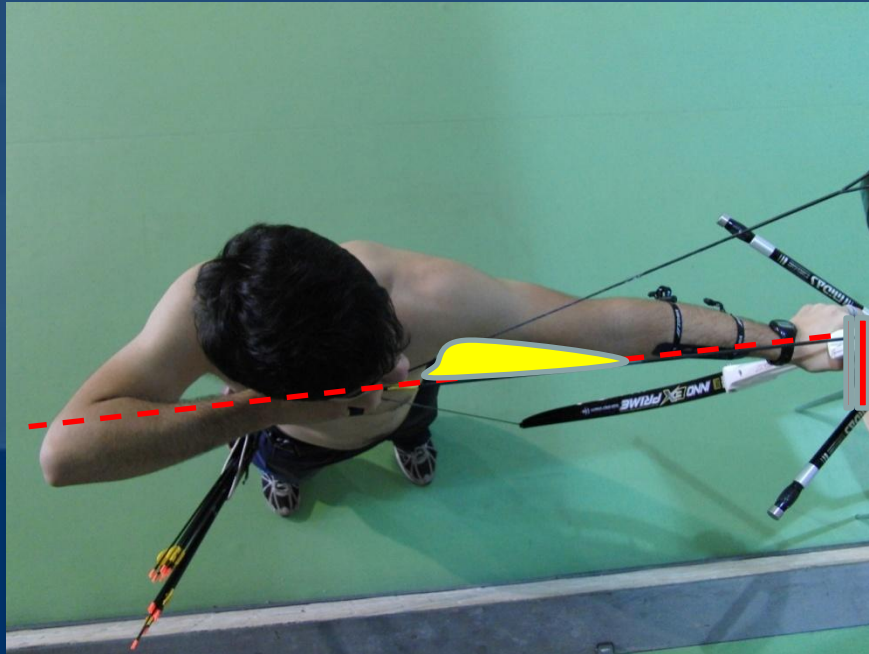




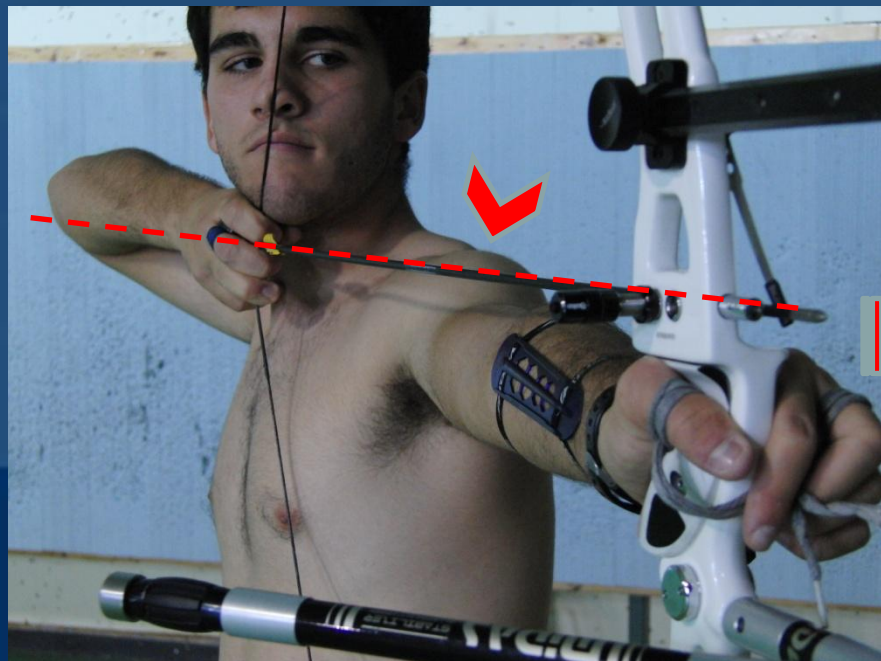
# ANCHOR ELBOW POSITION



# ANCHOR ALIGNMENT

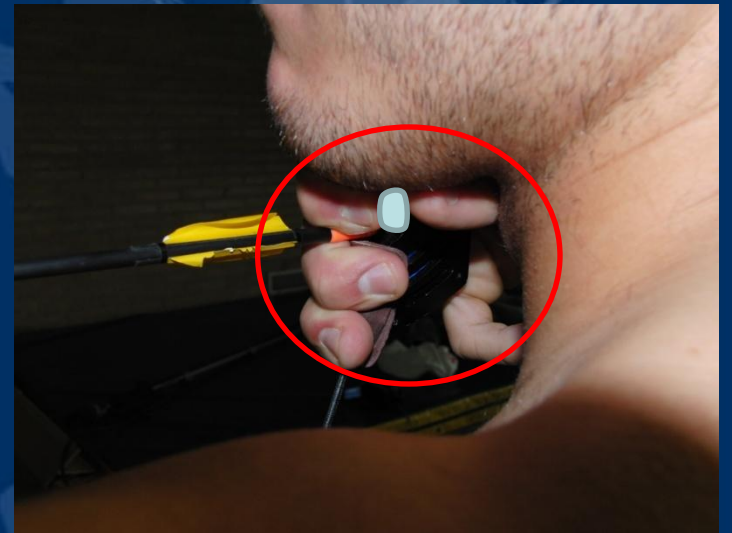
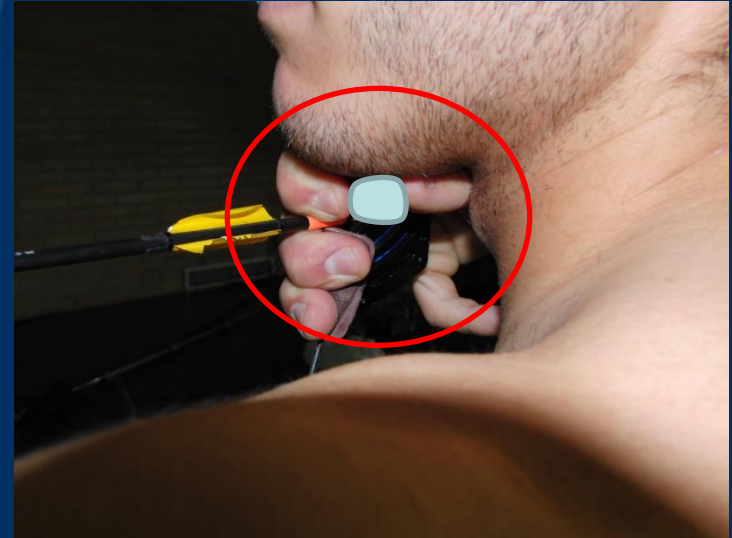
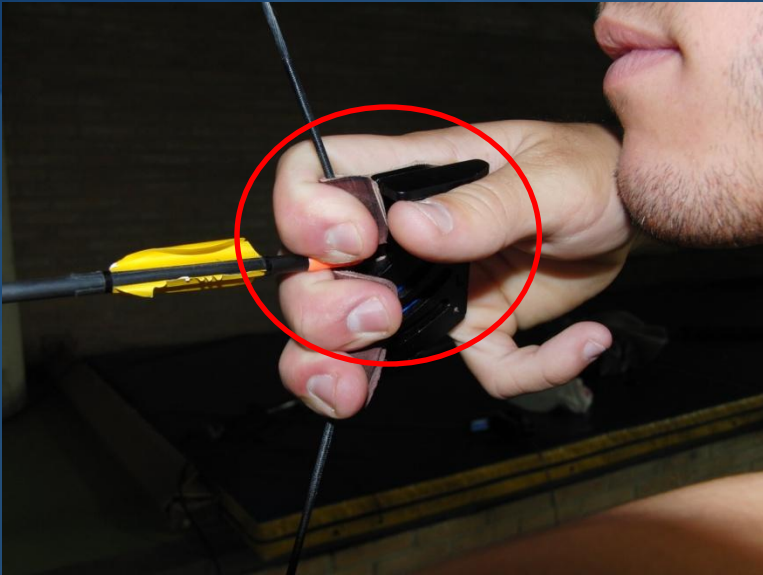


# ANCHOR ALIGNMENT





# ANCHOR HOLD POSITION



# ANCHOR EYES ALIGNMENT



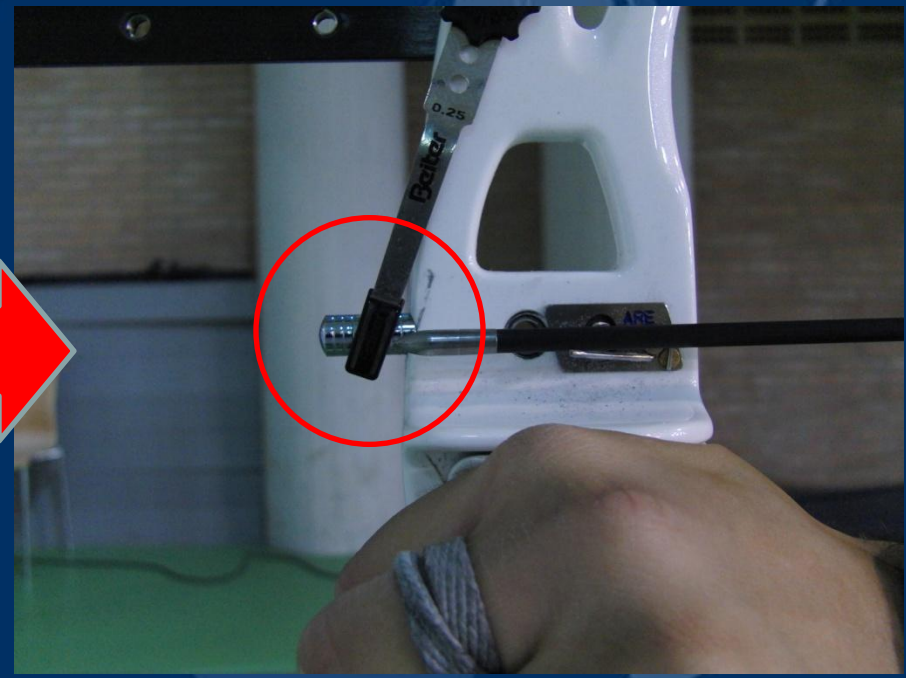
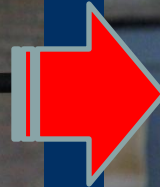
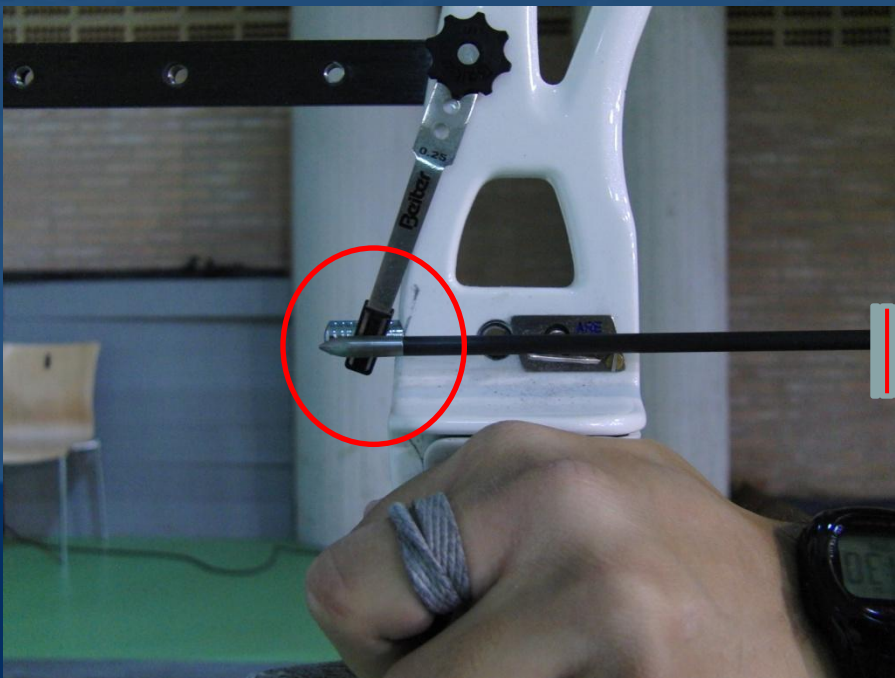


# ANCHOR EYES ALIGNMENT





# ANCHOR CLICKER POSITION





# 2015 World Archery Coaching Seminar





**Thank you!!**  
**Ready to answer your questions!**

Hyungmok Cho (Spain archery federation)  
archeryjo@gmail.com